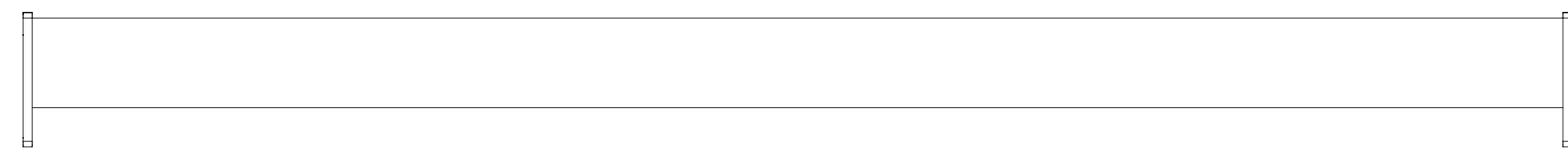


**A** belka łącząca x 1 szt | connecting beam x 1 pc



# INSTRUKCJA MONTAŻU | ASSEMBLY INSTRUCTION

## MB 08, MB 10, MB 12, MB 14, MB 16, MB 18, MB 20

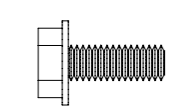


2021.03

**MB 08, MB 10, MB 12**

**MB 14, MB 16, MB 18, MB 20**

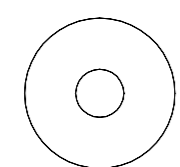
**B** śruba x 4 szt | screw x 4 pcs



**C** podkładka dystansowa | spacer

MB 08, MB 10, MB 12 x 2 szt | x 2 pcs

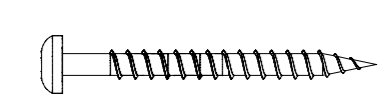
MB 14, MB 16, MB 18, MB 20 x 3 szt | x 3 pcs



**D** wkręt | sharp screw

MB 08, MB 10, MB 12 x 2 szt | x 2 pcs

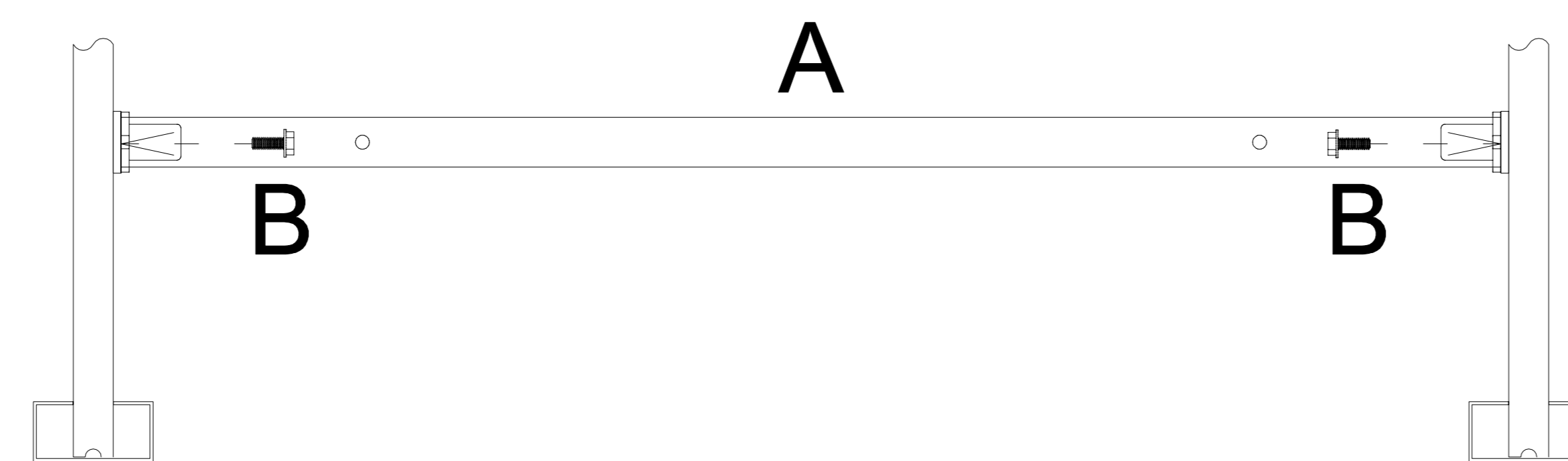
MB 14, MB 16, MB 18, MB 20 x 3 szt | x 3 pcs



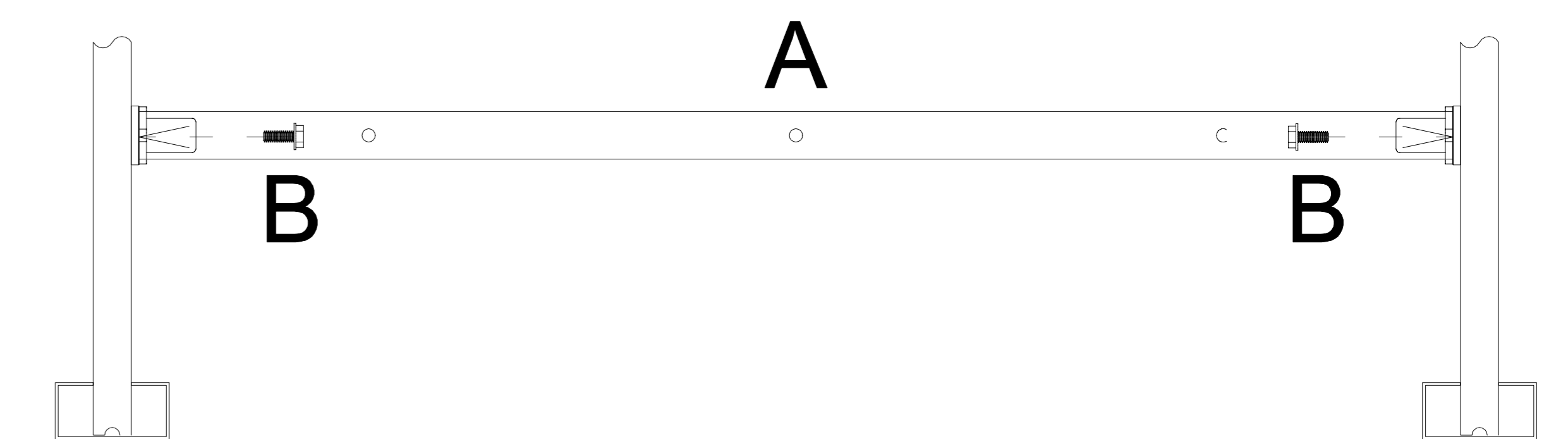
potrzebne narzędzia | necessary tools



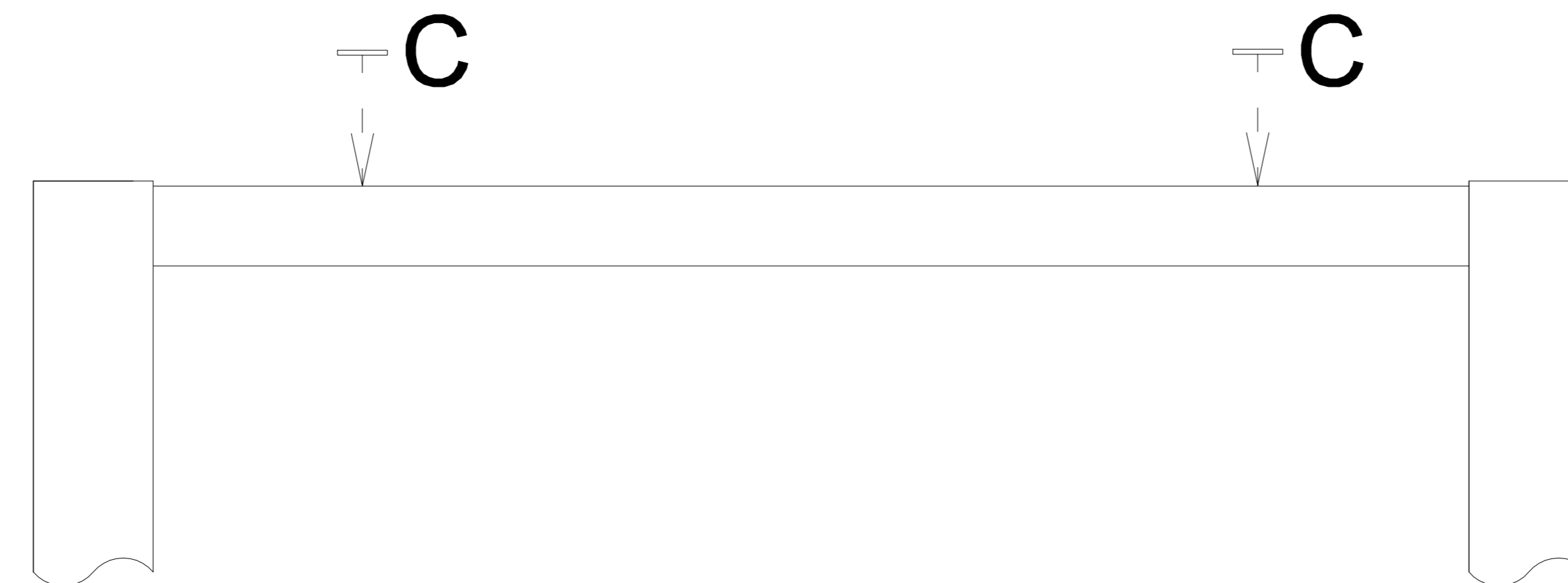
**1**



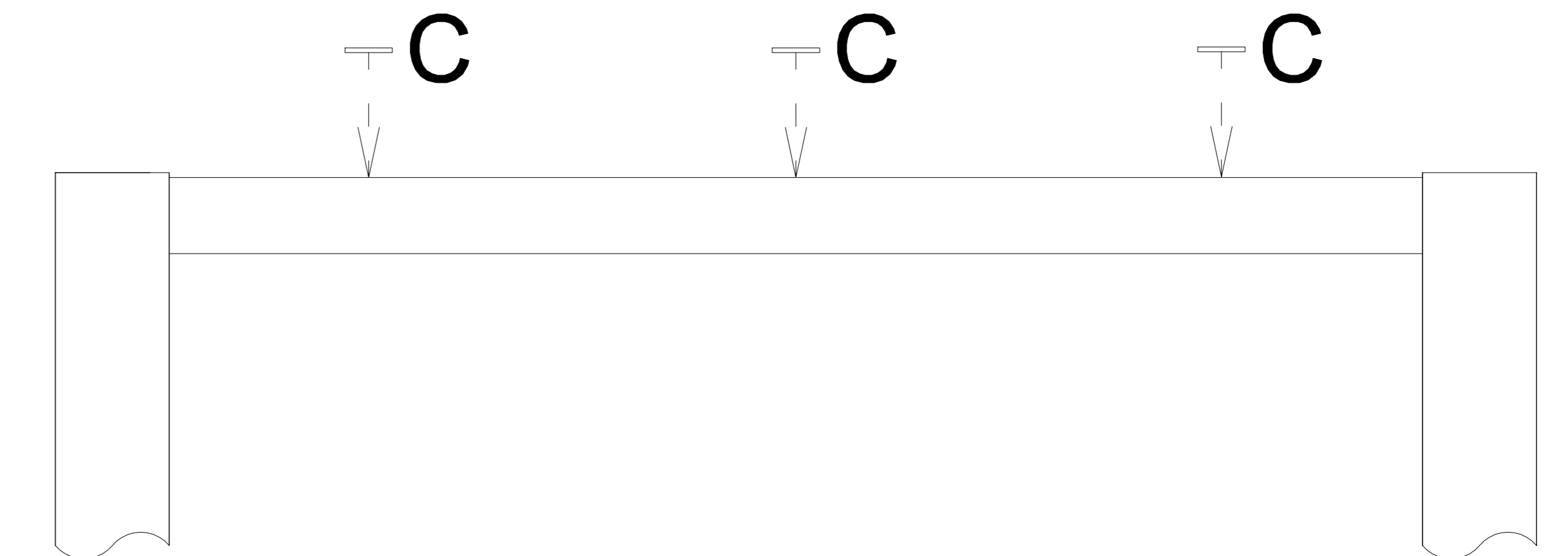
**1**



**2**



**2**



**3**



**3**

