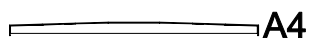
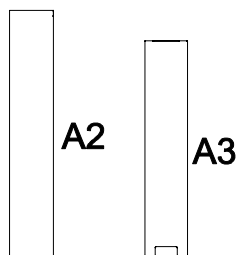
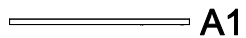


**A** stelaż biurka x 2 szt | steel legs x 2 pcs



**B** zaślepka x 4 szt | end plug x 4 pcs



**C** regulator x 4 szt | adjustable feet x 4 pcs



**D** śruba x 8 szt | screw x 8 pcs



**E** klucz imbusowy x 1 szt | allen key x 1 pc



**F** wkręt x 8 szt | sharp screw x 8 pcs



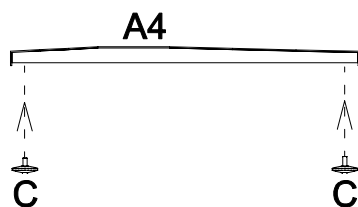
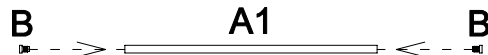
# INSTRUKCJA MONTAŻU | ASSEMBLY INSTRUCTION

## ST 226

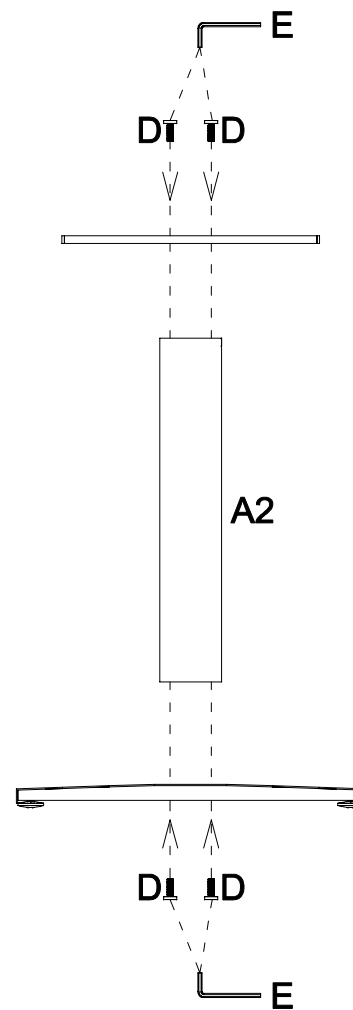
2019.08



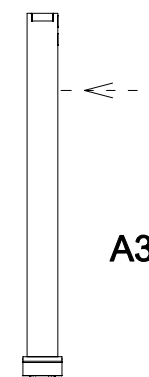
1



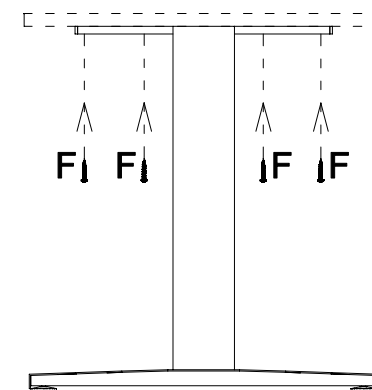
2



3



4



potrzebne narzędzia | necessary tools

