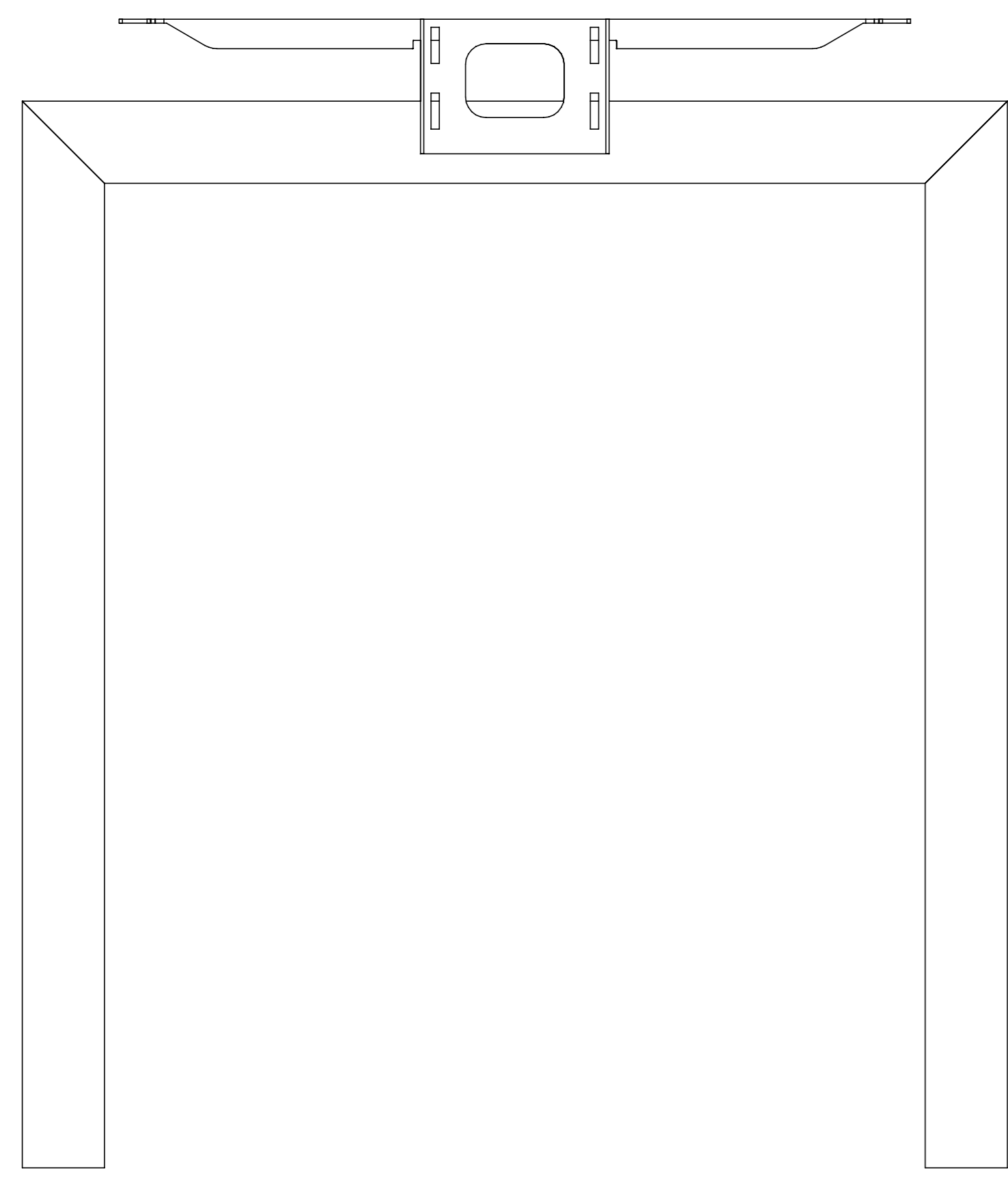
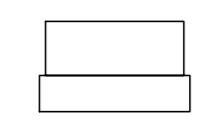


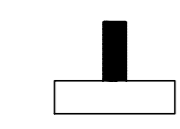
**A** stelaż biurka x 2 szt | steel legs x 2 pcs



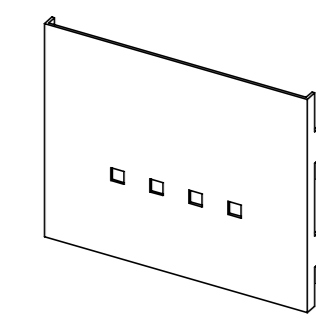
**B** wkładka x 4 szt | insert x 4 pcs



**C** regulator x 4 szt | adjustable feet x 4 pcs



**D** osłonka głowicy x 2 szt | top cover x 2 pcs



**E** wkręt x 12 szt | sharp screw x 12 pcs



potrzebne narzędzia | necessary tools



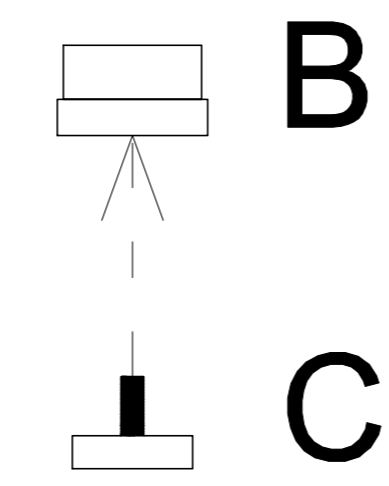
# INSTRUKCJA MONTAŻU | ASSEMBLY INSTRUCTION

## Q 7306, Q 7307, Q 7308

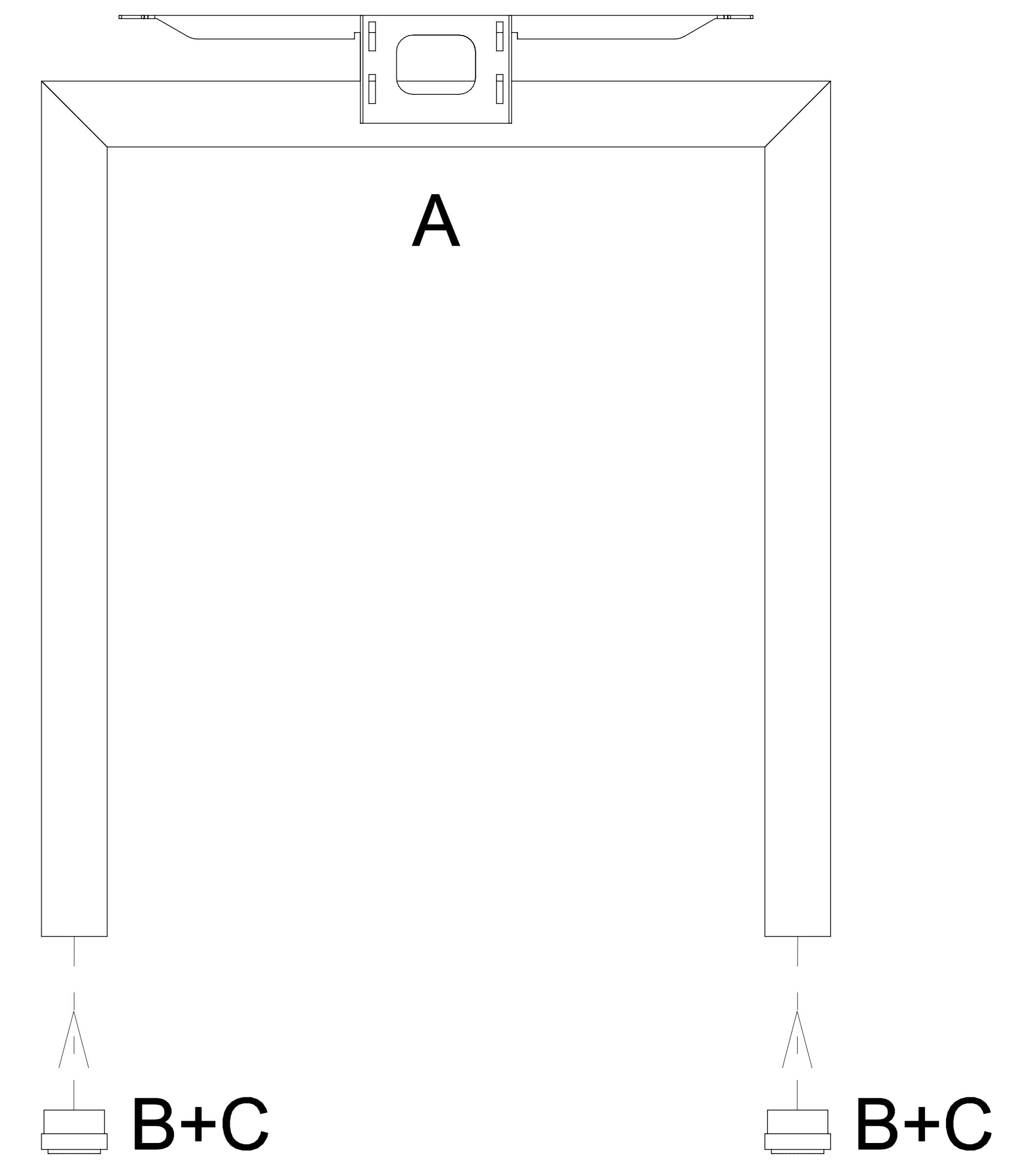


2019.06

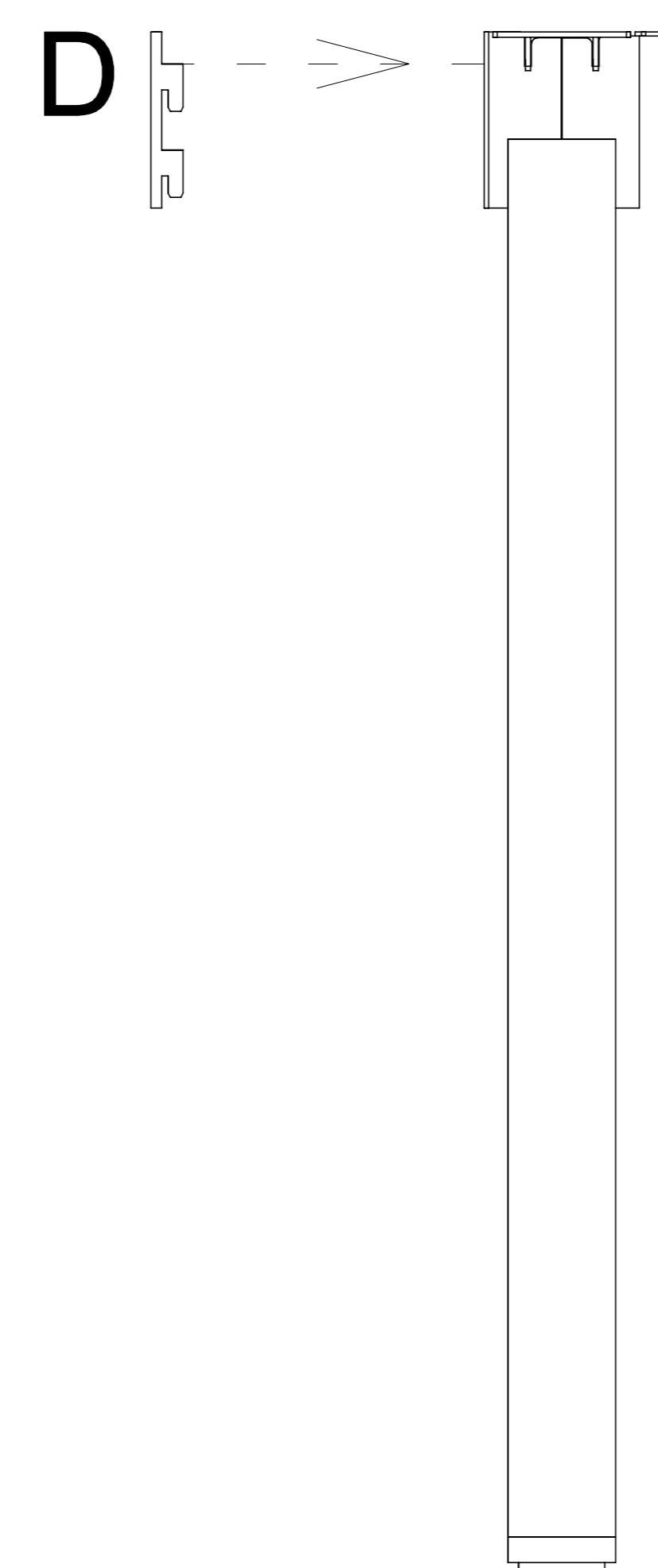
1



2



3



4

